



# SUZUKA® TEXTURE COATING



SUZUKA® TEXTURE COATING

EDITION  
01

MAGIC GRANITE,  
STONY COAT &  
CERAMIC COAT

FOR THE EXTERIOR  
& INTERIOR

WALL FINISH  
PROFESSIONALS.

SINCE  
1977

Conforms to LEED,  
U.S. Green Building Council Standards

## Application Process, Packing & Consumptions.

Process	Product Code	Dilution	Packing	Number of Coats	Coating Interval	Consumption (±15%)	Coverage (per drum)	Application Tools
<b>1 Surface Preparation</b>	Surface shall be dry and free from dirt, oil, grease and other contaminants. All cracks or defective substrate shall be repaired with suitable cement filler.							
<b>2 Primer</b>	EMP	Max 5% clean water	1 L 18 L	1	3 hrs	7 - 9 m <sup>2</sup> /l	7 - 9 m <sup>2</sup> 126 - 162 m <sup>2</sup>	Roller or Brush
<b>3 Texture Coat</b>	MGM	-	25 kg	1 - 2	24 hrs	4.2 - 5.0 kg/m <sup>2</sup>	5 - 6 m <sup>2</sup>	Spray Gun (Nozzle 8 mm)
	NSC	-	25 kg	1 - 2	24 hrs	4.2 - 5.0 kg/m <sup>2</sup>	5 - 6 m <sup>2</sup>	Spray Gun (Nozzle 6.5 mm)
	TC	-	25 kg	1 - 2	24 hrs	3.0 - 3.6 kg/m <sup>2</sup>	7 - 8 m <sup>2</sup>	Spray Gun (Nozzle 5 mm)
<b>4 Top Coat</b>	FSI	-	1 L 15 L	1 - 2	-	8 - 10 m <sup>2</sup> /l/coat	8 - 10 m <sup>2</sup> 120 - 150 m <sup>2</sup>	Roller or Brush

### Primer Colours

- |                    |           |                   |           |                  |           |                  |           |
|--------------------|-----------|-------------------|-----------|------------------|-----------|------------------|-----------|
| 1 EMP White        | EMP-01-WH | 3 EMP Dark Yellow | EMP-03-DY | 5 EMP Dark Red   | EMP-05-DR | 7 EMP Light Grey | EMP-07-LG |
| 2 EMP Light Yellow | EMP-02-LY | 4 EMP Light Red   | EMP-04-LR | 6 EMP Dark Brown | EMP-06-DB | 8 EMP Dark Grey  | EMP-08-DG |

## WALL FINISH PROFESSIONALS



[suzukagroup.id](http://suzukagroup.id)

[suzuka.indonesia](https://www.instagram.com/suzuka.indonesia) | Hotline : 0877 51 789852

Showroom: Ruko Villa Gading Indah A2, No.9 Kelapa Gading, Jakarta Utara.

\* Photos of the products shown in this catalogue may vary in color due to lighting condition & printing. We suggest you examine actual product samples before ordering.



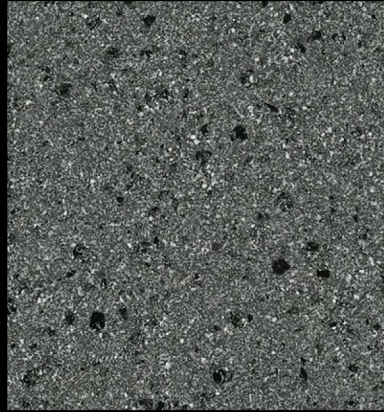
TEXTURECOATING ID-E1-2402

INDONESIA EDITION



## SUZUKA<sup>®</sup> MAGIC GRANITE

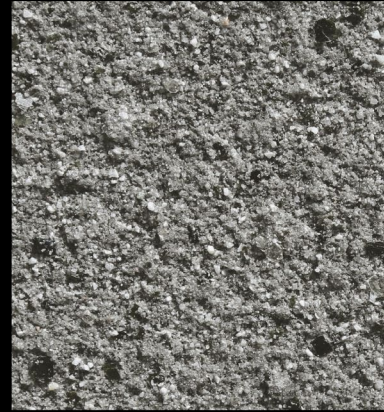
With the multi-tone combination of brilliant inorganic mineral flakes, a natural and coarse, yet exquisite granite look is created.



MGM-321



MGM-322



MGM-323



MGM-351



MGM-352



MGM-353

## SUZUKA<sup>®</sup> STONY COAT

Using a combination of color sands, SUZUKA<sup>®</sup> Stony Coat crafts the authentic effects of natural stones. Its granular surface gives the wall a bold and prominent finish.



NSC-609



NSC-622



NSC-623



NSC-651



NSC-652



NSC-653

## SUZUKA<sup>®</sup> CERAMIC COAT

The blend of fine grandeur color sands forms a suave and refined texture, giving the walls an elegant and graceful outlook.



TC-701



TC-705



TC-722



TC-723



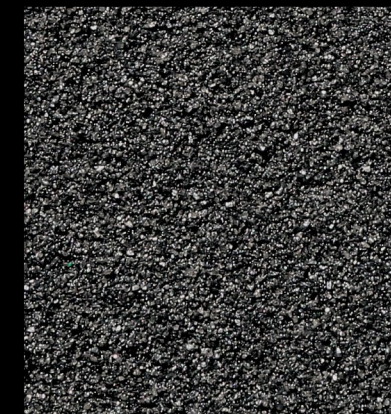
TC-724



TC-725



TC-726



TC-727



Conforms to LEED,  
U.S. Green Building  
Council Standards

- The main materials in the following samples are made of natural color sands & ceramics sands, thus the color may differ slightly.
- Due to the difference in the base of the surface, the color & pattern may be differ.