



SUZUKA® GROUP

TAIWAN • MALAYSIA • THAILAND

Application Steps

Process	Material (Mixing Weight Ratio)	Number of Coats	Interval Time Required Between Steps	Consumption (±15%)	Tools of Application
1. Surface Preparation	Surface needs to be dry and free from dirt, oil, and foreign matter. Surface unevenness, including cracks, will need to be treated with cement filler.				
2. Under Coating	EM Sealer : Water 100 : 0 -10	1	3	0.20ltr/ m ²	Spray Gun, Roller or Brush
3. Texture Coating	SGM Body Coat : Water 100 : 0 -10	1	24	1.2kg/ m ²	Spray Gun
	SGM Base Color : Water - : -	2	3	0.35ltr/ m ²	Spray Gun, Roller or Brush
	SGM : Water 100 : 0 -1	1 ~ 2	24	0.4kg/ m ²	SGM Spray Gun
4. Top Coating	SGM Top Coat : Water - : -	1	-	0.15ltr/ m ²	Spray Gun, Roller or Brush

Photos of the products are based on the scale 1:3 and may vary in colour due to lighting conditions and printing. We suggest you examine actual product samples before ordering.

  **suzuka.**
group
www.suzuka.com.my
Hotline: 6012-258 7388



SUZUKA® GRANI
MULTICOLOR



ABOUT US

Suzuka® Malaysia – belonging to the Suzuka® Group, which holds manufacturing companies in Taiwan, Malaysia and Thailand – is one of Malaysia's leading manufacturers in decorative building materials. Specializing in a wide range of stone veneers, waterproofing materials, and texture coatings, we offer durable and versatile products that are suitable for decorating both interiors and exteriors of homes and commercial buildings.

Not only do our products cater to buildings of various aesthetics and designs, but they also exceed international quality and safety standards. Armed with protection against UV damage, water seepage, dust, dirt and stains, we lower potential maintenance costs in the future. In addition to being an ISO 9001 certified company, we also carry a selection of SIRIM QAS certified products and a range of environmentally-friendly products certified by Singapore Green Label and SIRIM Eco Label.

Within the past decade, we've become an international supplier to number of regions, including Australia, Saudi Arabia, Thailand, Cambodia, Qatar, the United Arab Emirates, Bahrain, Indonesia, Singapore, and West Africa.

To experience why Suzuka® products are trusted around the world, choose from our extensive range of coatings and artificial stone veneers.



SUZUKA® GRANI MULTICOLOR

SGM uses high-performance and environmentally-friendly technology. Its water-based coating packages itself into individual capsules, allowing each to contain its own unique formula and colour. This creates a one-time multi-colour spray system that is not only durable, but also effective in mirroring the authentic granite texture.

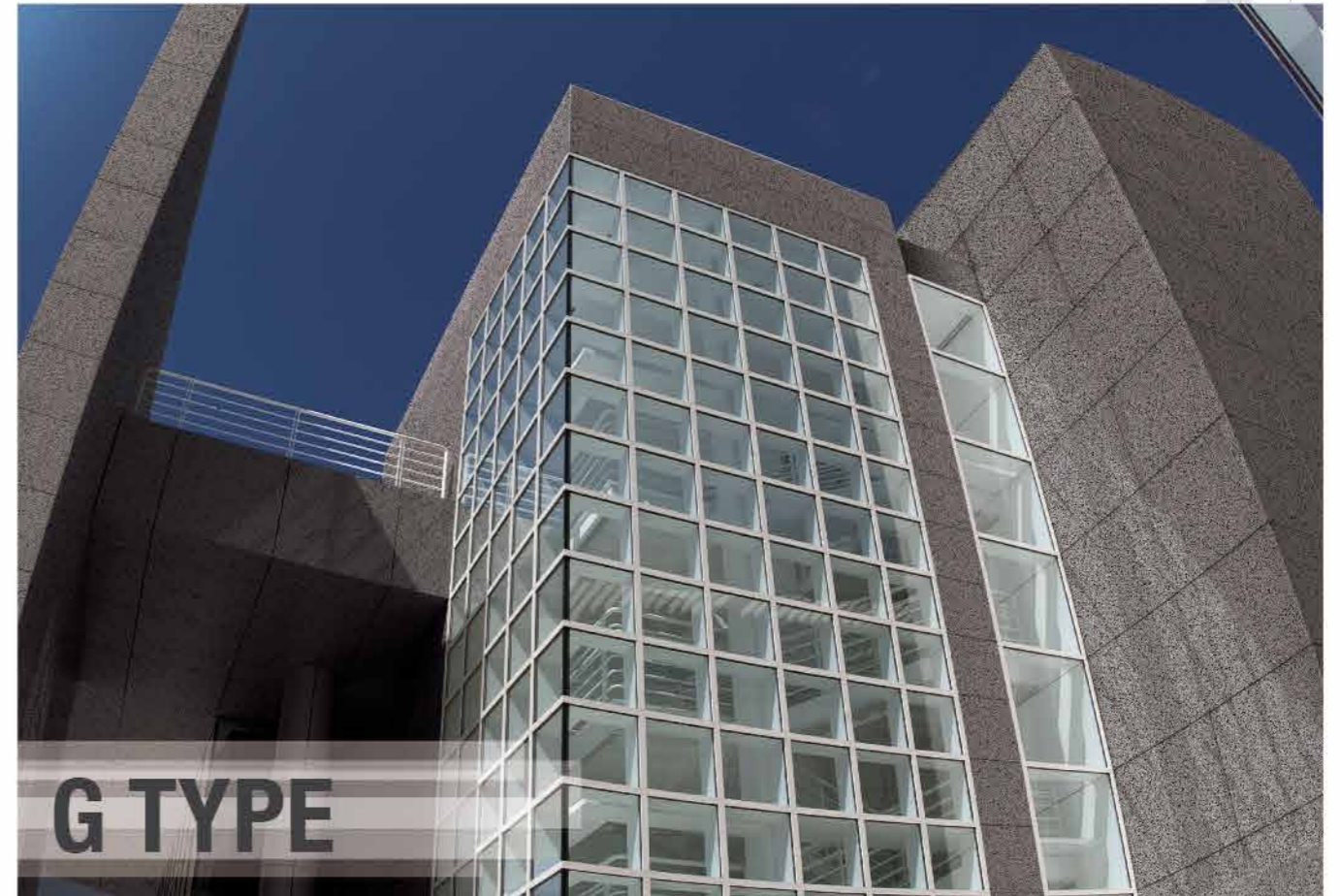
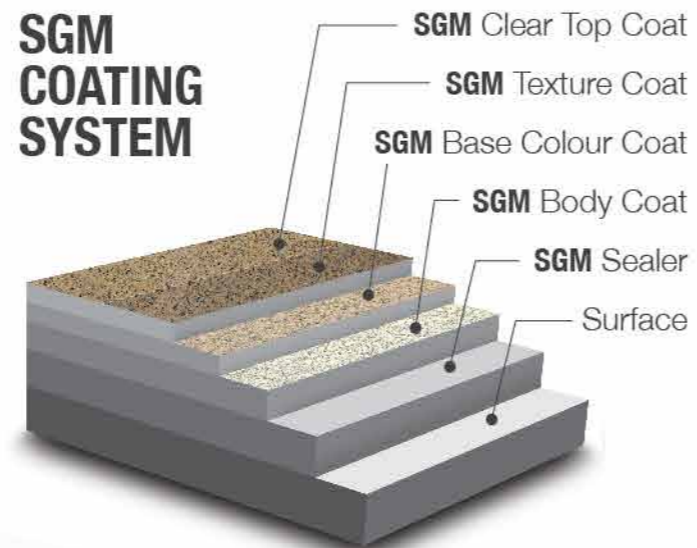


SGM vs. REAL GRANITE

FACTORS	SGM	REAL GRANITE
Installation Time	Quick	Slow
Installation Ease	Simple	Difficult and requires extensive set-up
Installation Cost	Economical	Expensive
Material Cost	Economical	Expensive
Colour Control	Yes	No
Environmental-Friendliness	Non-invasive & water-based	Environmentally invasive
Safety	No risk	Risk of loosened stones falling
Customization	Yes	No
Maintenance	Economical and simple	Requires replacement and colour matching

ADVANTAGES

- One-time, multi-colour spray system
- Colours and patterns can be customized
- Resistant to stains, fungus, algae, acid and alkali
- Washable and easy to maintain
- High adhesion and anti-peeling/flaking
- Superb elasticity and is crack resistant
- Water-based and eco-friendly
- Excellent durability against weather conditions



SGM-G-101



SGM-G-102



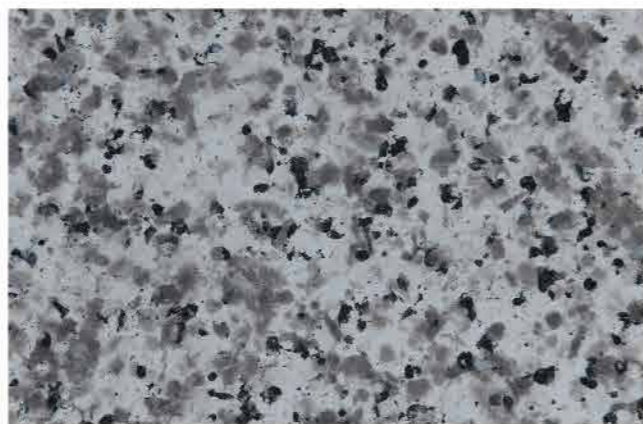
SGM-G-103



SGM-G-104



SGM-G-105



SGM-G-106



SGM-G-113



SGM-G-114



SGM-G-107



SGM-G-108



SGM-G-115



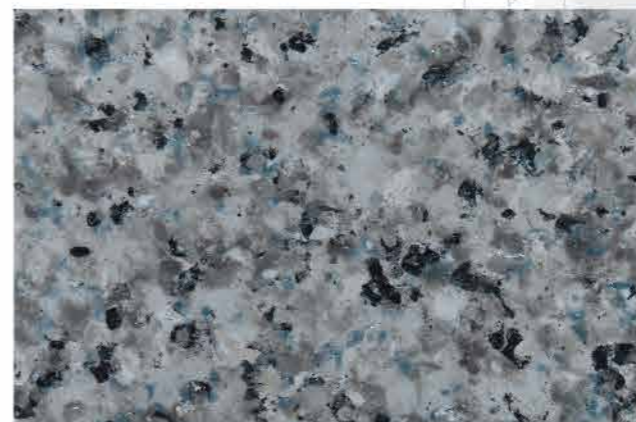
SGM-G-116



SGM-G-109



SGM-G-110



SGM-G-117



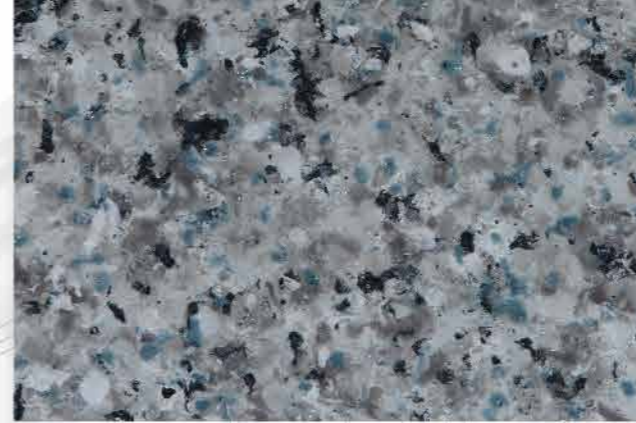
SGM-G-118



SGM-G-111



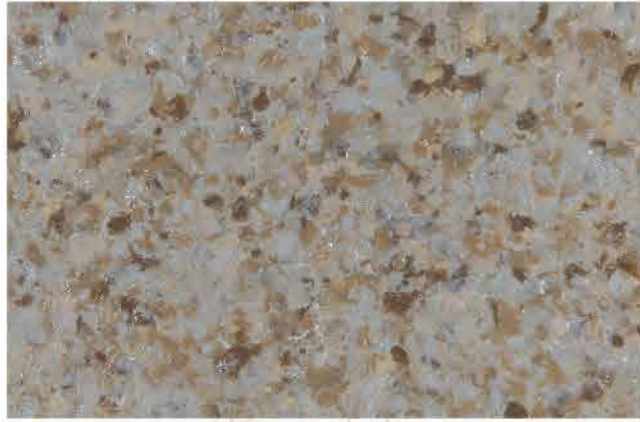
SGM-G-112



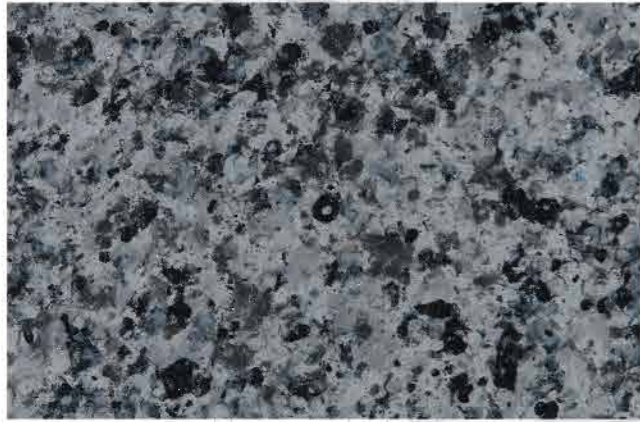
SGM-G-117



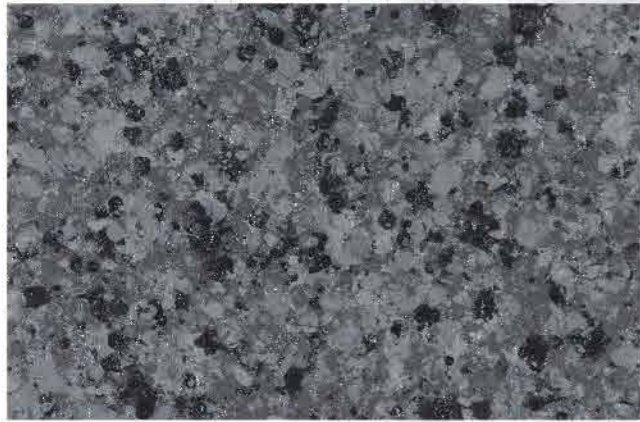
SGM-G-118



SGM-G-119



SGM-G-120



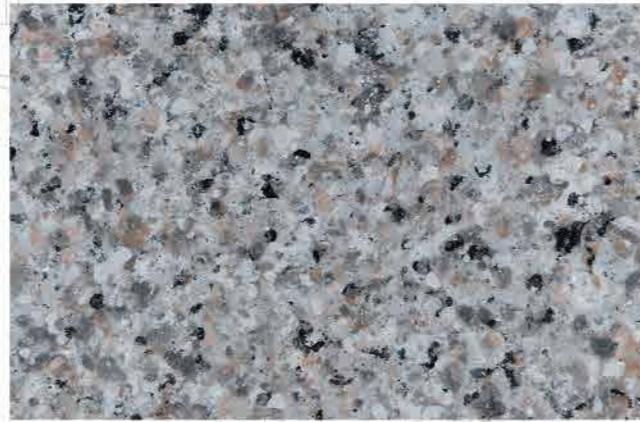
SGM-G-122



SGM-G-124



SGM-G-121



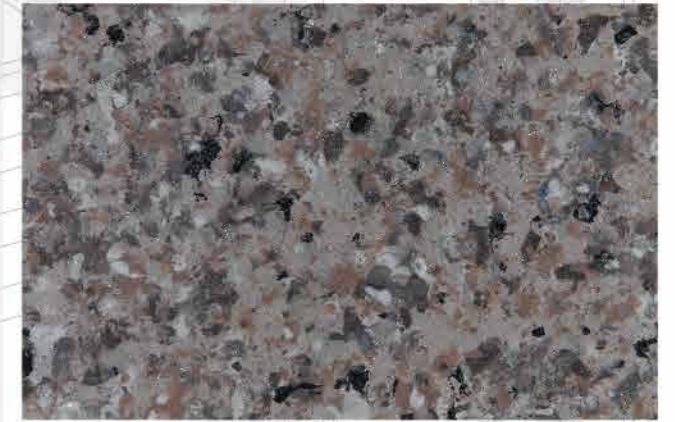
SGM-G-123



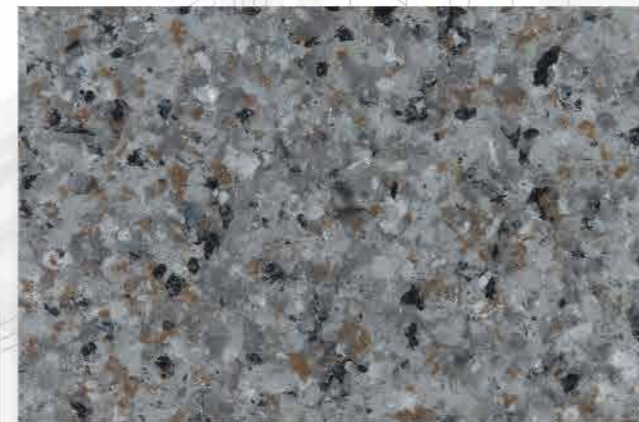
SGM-G-125



SGM-G-126



SGM-G-127



SGM-G-128



SGM-G-129



SGM-G-130



SGM-G-131



SGM-G-132



SGM-G-133



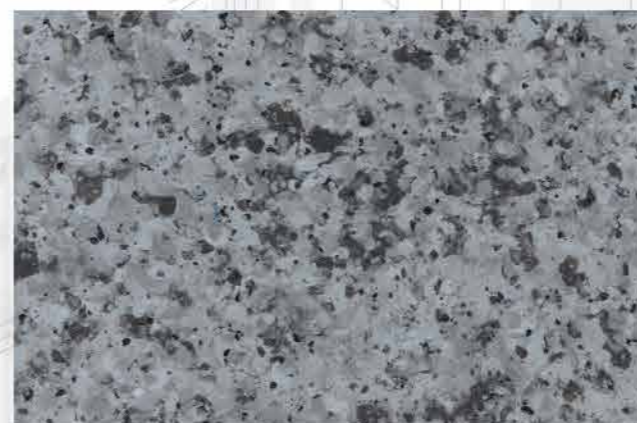
SGM-G-134



SGM-G-136



SGM-G-135



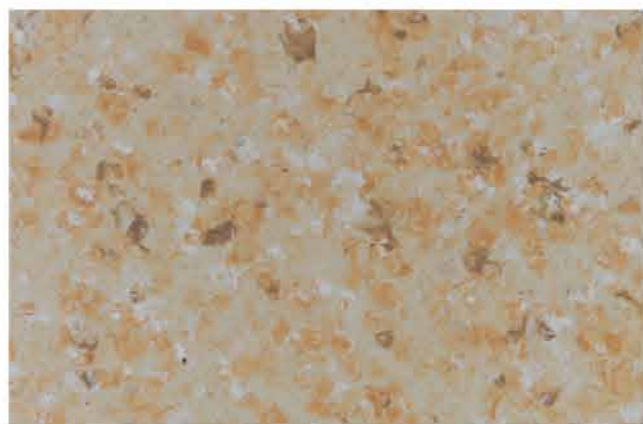
SGM-G-137



SGM-G-138



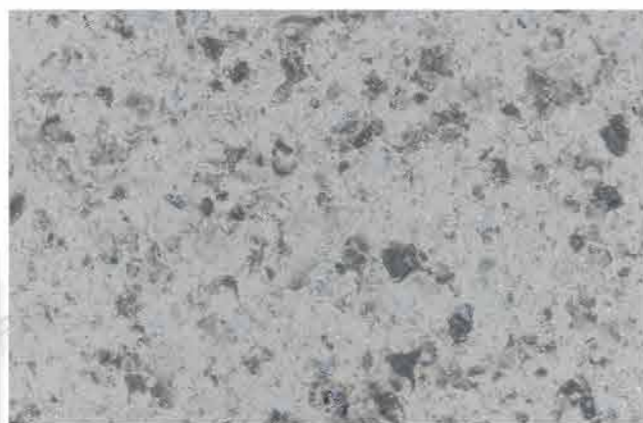
SGM-G-139



SGM-G-140



SGM-G-141



SGM-G-142



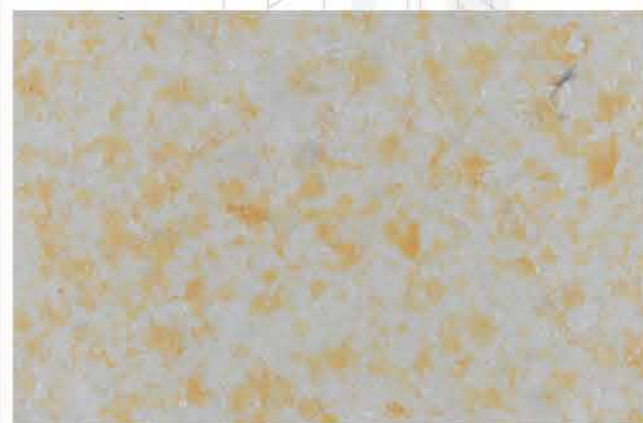
SGM-G-143



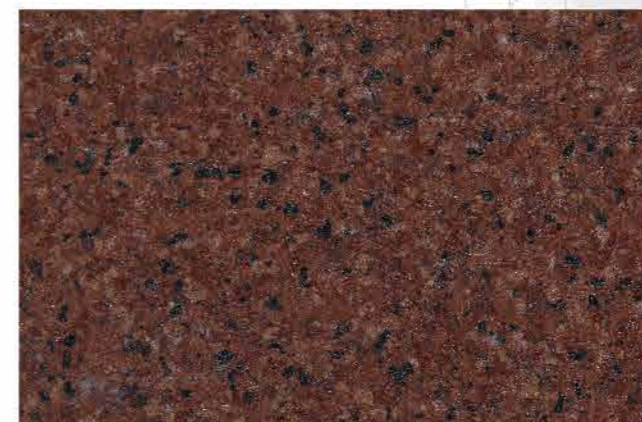
SGM-G-144



SGM-G-145



SGM-G-146



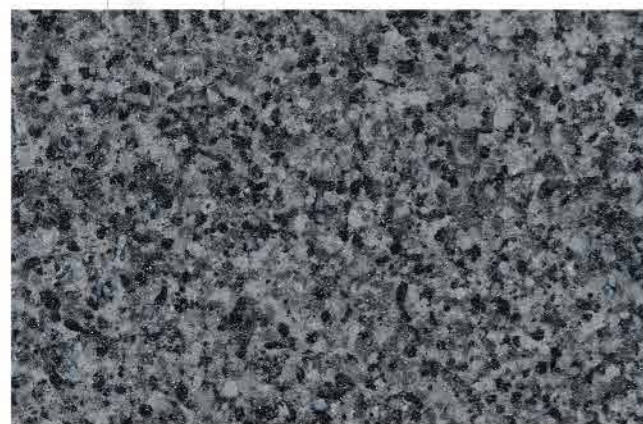
SGM-S-301



SGM-S-303



SGM-S-302



SGM-S-304



SGM-S-305



SGM-S-311



SGM-S-312



SGM-S-306



SGM-S-307



SGM-S-313



SGM-S-314



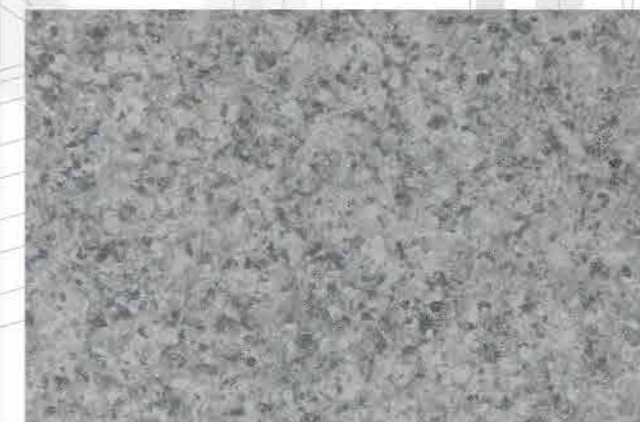
SGM-S-308



SGM-S-310



SGM-S-315



SGM-S-316



SGM-S-309



SGM-S-317



SGM-S-318