



# Strato.®

INTERIOR TEXTURE PAINT COLLECTION

## WALL FINISH PROFESSIONALS

TAIWAN • MALAYSIA • THAILAND



BRICK & STONE VENEER • TEXTURE PAINT • KASTPANEL • ECES • TEXTURE COATING • PEBBLE STONE COATING

SUZUKA®



[suzuka.com.my](http://suzuka.com.my)

[suzuka.group](https://www.facebook.com/suzuka.group) | Hotline : +6012-258 7388

\* Photos of the products shown in this catalogue may vary in color due to lighting condition & printing. We suggest you examine actual product samples before ordering.



STRATO-E6-2210



EDITION  
**06**





## Features

Crack Resistant



Low VOC & Odor



Formaldehyde & Lead Free



Green Choice, Water Based & Eco-friendly



Easy Application & DIY Friendly



Anti-chalking & Efflorescence



Applicable on Ceiling



Easy Maintenance



Easy to Touch Up



Matte Finishing



# Strato<sup>®</sup> CEMENT TEXTURE

Create everlasting look with Strato<sup>®</sup> Cement Texture. Whether you are going for the industrial, scandinavian, contemporary or minimalistic style, the backdrop of the cement texture can complete the look.



• **INTERIOR USE ONLY**  
For exterior options, please see **MONOKRETE**.

SCT-301

SILVER  
GREY



Silver Grey | **SCT-301**



Natural Grey | **SCT-302**



Shark Grey | **SCT-303**



SCT-304

GRANITE  
GREY



SCT-304

GRANITE  
GREY

SCT-306

CHARCOAL  
GREY

Interior Design by  
**GROUND UP**



SCT-308

SHADOW  
GREY



SCT-304

GRANITE  
GREY



Granite Grey | **SCT-304**



Iron Grey | **SCT-305**



Charcoal Grey | **SCT-306**



Metal Grey | **SCT-307**



Shadow Grey | **SCT-308**

Interior Design by  
**DEWANI**®



SCT-309

ASHES  
GREY



Ashes Grey | **SCT-309**



Misty Grey | **SCT-310**



SCT-309

ASHES  
GREY

# APPLICATION TECHNIQUE



APPLICATION VIDEO

Preparation: - Cover the edges of surface that won't be painted by masking it with tape, paper or plastic.  
- Clean up the wall surface to ensure it is free from dirt and dust.



## 1 PRIMER

Roll 2 layers of primer on the entire surface.  
Allow 30 minutes to dry between the layers.  
(The primer can be diluted with maximum 5% of clean water)

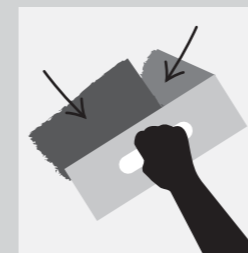
Tool: Roller



## 2 SANDING

Sand the entire surface in circular motion to ensure the surface is smooth.

Tool: 600 Grit Sand Paper



## 3 TEXTURE COAT

Scrape texture coat randomly to create pattern. Ensure the whole surface area is covered. Then apply second layer.

Tool: Stainless Steel Trowel

(use a larger trowel for a larger pattern, a smaller trowel for smaller pattern)



## 4 SANDING (OPTIONAL)

Sand the entire surface in circular motion to enhance the pattern.

Tool: 600 Grit Sand Paper



## 5 TOPCOAT

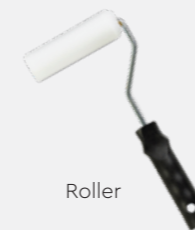
Apply SR-Top 1 on entire surface using a dry sponge in circular motions.

**IMPORTANT:** Use a clean and dry sponge or cleaning cloth to wipe the excess topcoat before it dries to avoid the sponge marks.

Tool: Sponge / Cleaning Cloth

**IMPORTANT:** Color may vary on application technique & amount of material used.

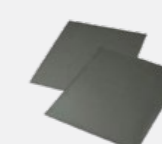
Tools:



Roller



Trowel / Scrapper



Sand Paper (600 Grit)



Sponge / Cleaning Cloth

# PACKING DATA

1 L	Primer
1 L	Texture Coat
0.5 L	Topcoat (SR-Top 1)

Coverage (per set)

WALL	6 - 7 sqm
CEILING	5 - 6 sqm



# Strato.<sup>®</sup> VELOURS

Rich velvety layers of color to enhance the interior space.  
Each color brings out a different mood & ambience,  
find a color that matches your personality.



## Features

Crack Resistant



Low VOC & Odor



Formaldehyde & Lead Free



Green Choice, Water Based & Eco-friendly



Easy Application & DIY Friendly



Anti-chalking & Efflorescence



Applicable on Ceiling



Easy Maintenance



Easy to Touch Up



Matte Finishing



• **INTERIOR USE ONLY**  
For exterior options, please see **MONOKRETE**.



SVL-401

CLOUDY  
GREY



Cloudy Grey | **SVL-401**



Mushroom Beige | **SVL-402**



Hazel Wood | **SVL-403**



SVL-404

SUMMER  
SAHARA



Summer Sahara | **SVL-404**



Walnut Leather | **SVL-405**



SVL-405

WALNUT  
LEATHER



Brocade Blue | **SVL-406**



SVL-408

ROYAL  
DENIM



SVL-414

HERBAL  
GARDEN



Frosted Mint | **SVL-411**



Vivid Emerald | **SVL-412**



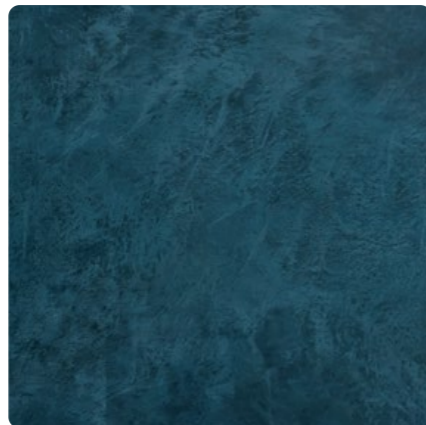
Hunter Green | **SVL-413**



Herbal Garden | **SVL-414**



Deep Marine | **SVL-407**



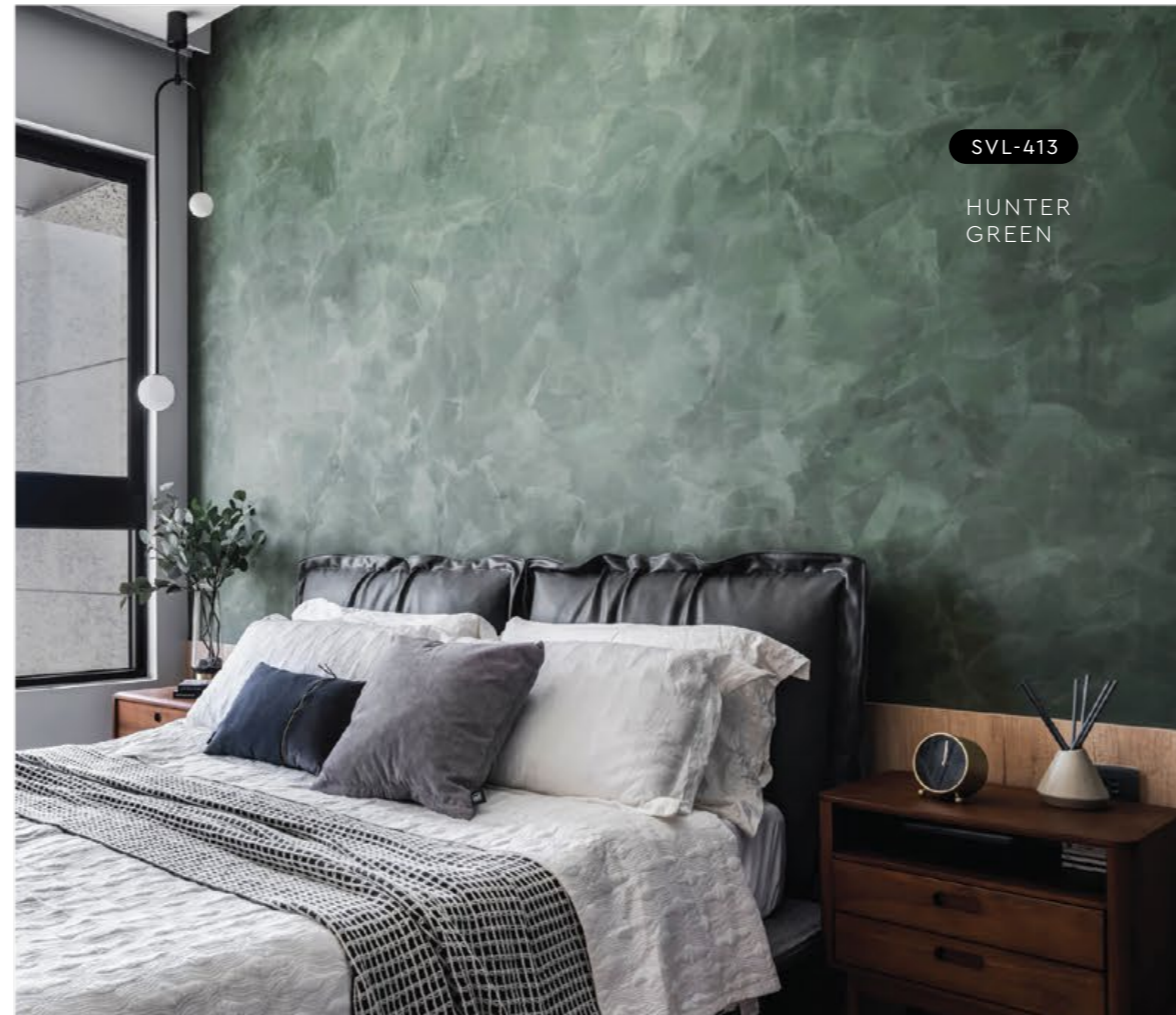
Royal Denim | **SVL-408**



Violet Memory | **SVL-409**



Rosy Mauve | **SVL-410**



SVL-413

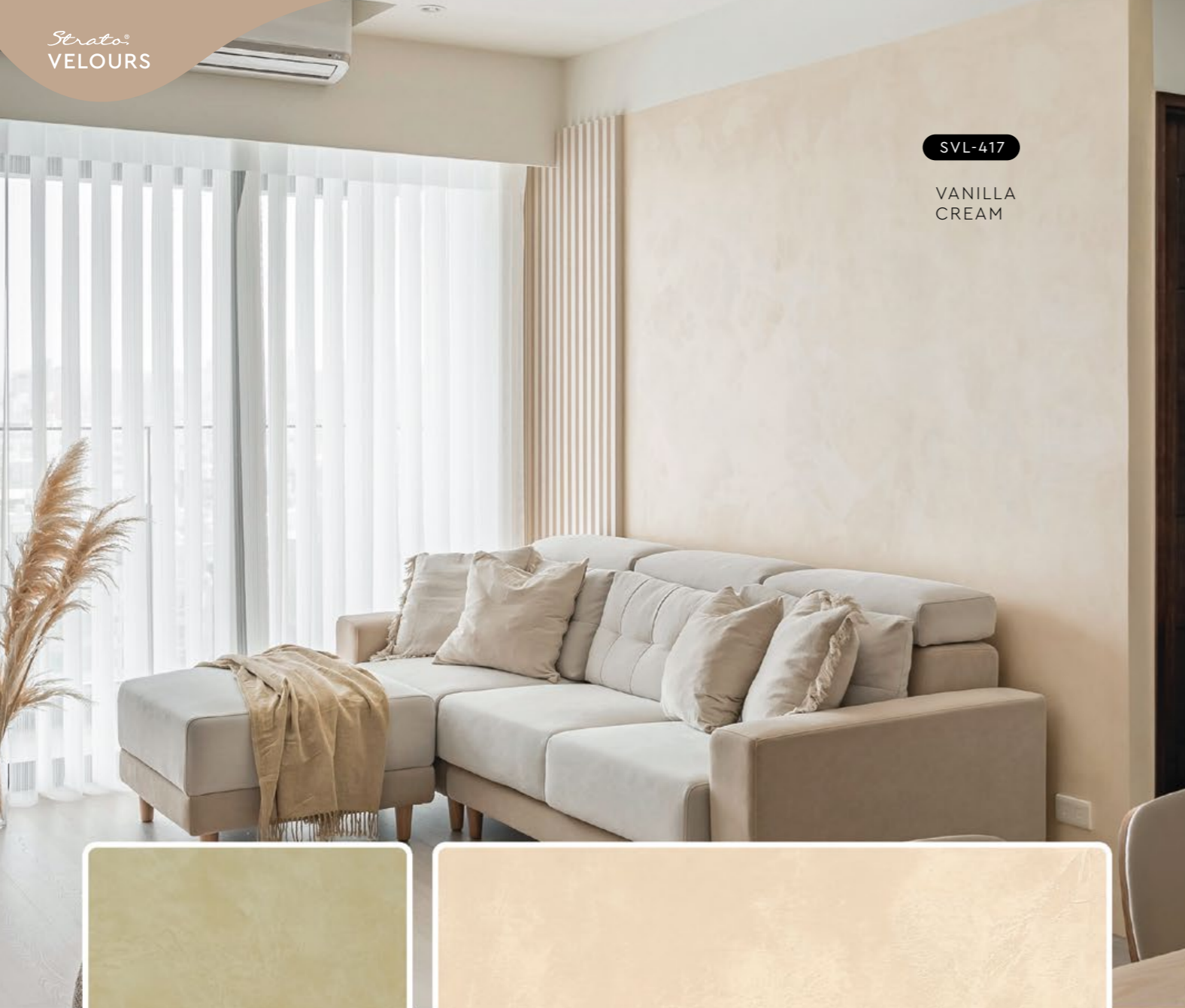
HUNTER  
GREEN



SVL-409

VIOLET  
MEMORY





SVL-417

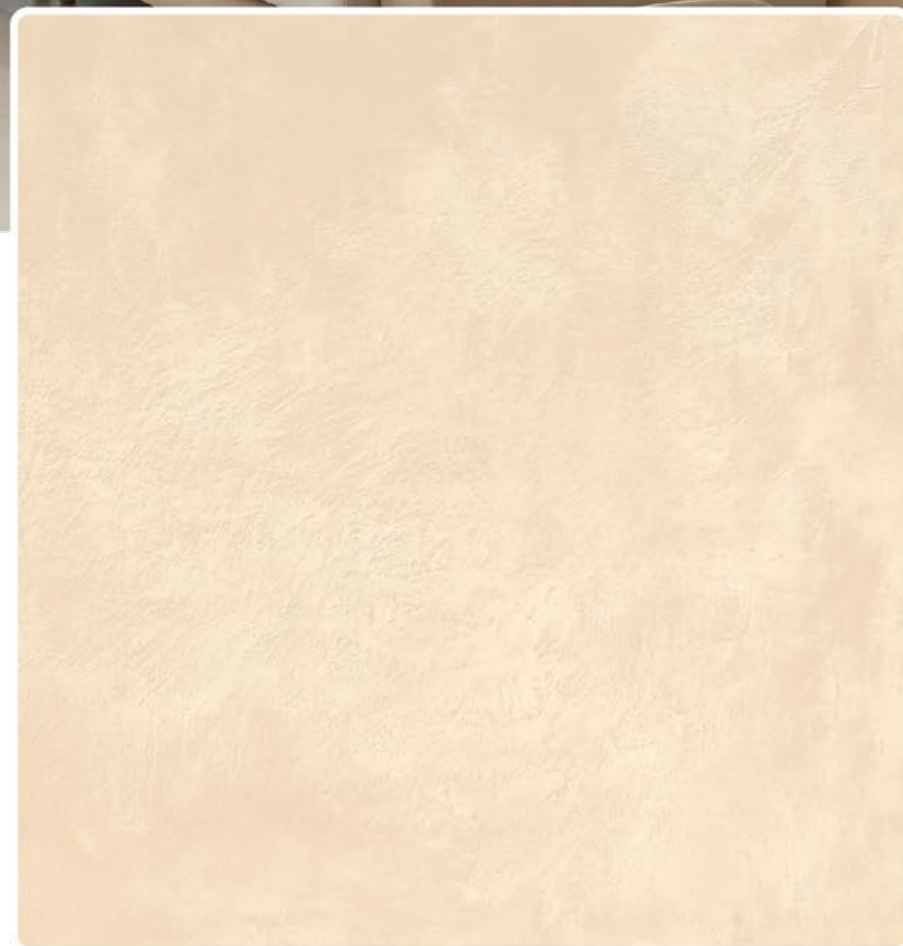
VANILLA  
CREAM



Lime Mist | SVL-415



Flamingo Blush | SVL-416



Vanilla Cream | SVL-417

# APPLICATION TECHNIQUE



APPLICATION VIDEO

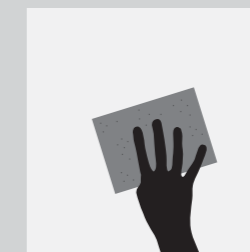
Preparation: - Cover the edges of surface that won't be painted by masking it with tape, paper or plastic.  
- Clean up the wall surface to ensure it is free from dirt and dust.



## 1 PRIMER

Roll 2 layers of primer on the entire surface. Allow 30 minutes to dry between the layers.  
(The primer can be diluted with maximum 5% of clean water)

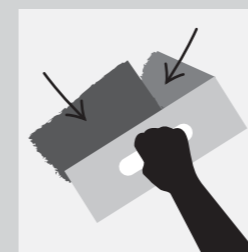
Tool: Roller



## 2 SANDING

Sand the entire surface in circular motion to ensure the surface is smooth.

Tool: 600 Grit Sand Paper



## 3 TEXTURE COAT

Scrape texture coat randomly to create pattern. Ensure the whole surface area is covered. Then apply second layer.

Tool: Stainless Steel Trowel

(use a larger trowel for a larger pattern, a smaller trowel for smaller pattern)



## 4 SANDING (OPTIONAL)

Sand the entire surface in circular motion to enhance the pattern.

Tool: 600 Grit Sand Paper



## 5 TOPCOAT

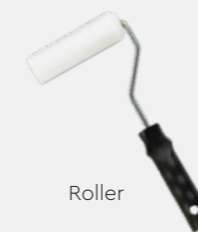
Apply SR-Top 1 on entire surface using a dry sponge in circular motions.

**IMPORTANT:** Use a clean and dry sponge or cleaning cloth to wipe the excess topcoat before it dries to avoid the sponge marks.

Tool: Sponge / Cleaning Cloth

**IMPORTANT:** Color may vary on application technique & amount of material used.

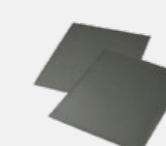
Tools:



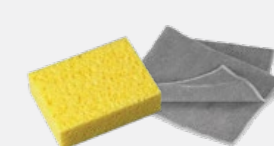
Roller



Trowel / Scrapper



Sand Paper (600 Grit)



Sponge / Cleaning Cloth

# PACKING DATA

1 L	Primer
1 L	Texture Coat
0.5 L	Topcoat (SR-Top 1)

Coverage (per set)

WALL	6 - 7 sqm
CEILING	5 - 6 sqm



# Strato® cashmere

Strato® Cashmere embodies the pinnacle of elegance in textured coating. Achieved through smooth layering and delicate craftsmanship, the finished product gives a refined and royal appearance with a lingering hint of sophistication.

• INTERIOR USE ONLY

## Features

Low VOC & Odor



Formaldehyde & Lead Free



Green Choice, Water Based & Eco-friendly



Easy, Quick Application & DIY Friendly



Easy Maintenance





SCH-003

SILVER  
SLATE



SCH-016

STARDUST  
SILVER

Interior Design by  
**METRICS**  
GLOBAL



SCH-008

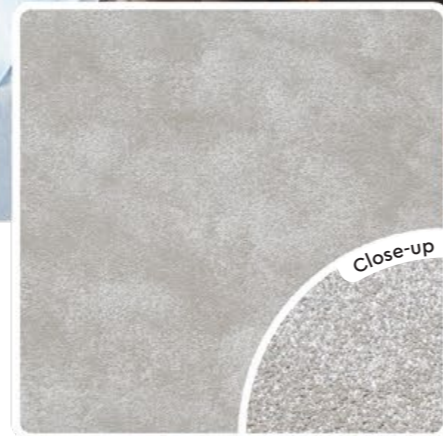
EGGSHELL  
BEIGE



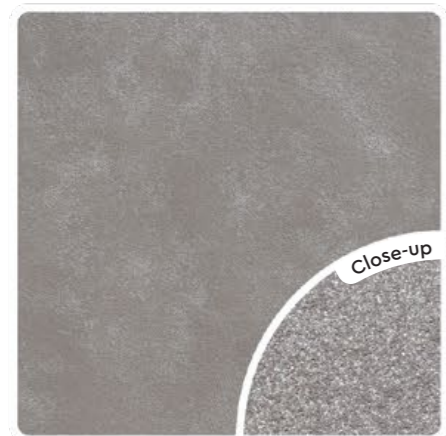
Pearl White | **SCH-001**



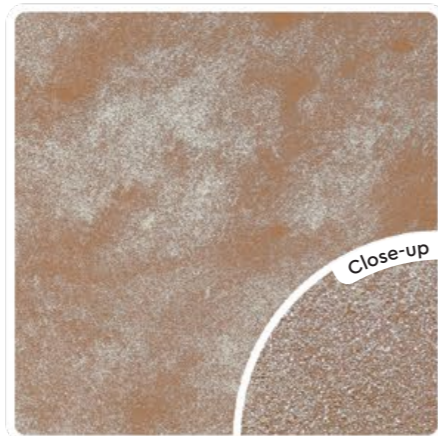
Silver Mist | **SCH-002**



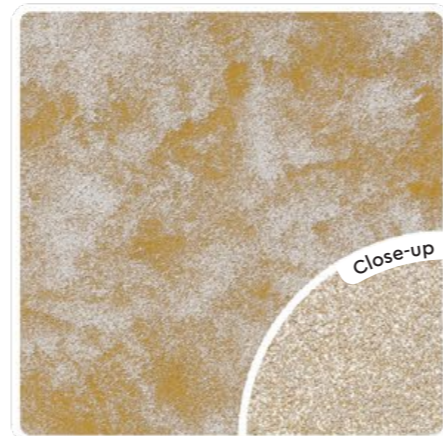
Silver Slate | **SCH-003**



Platinum Metal | **SCH-004**



Bronze Age | **SCH-005**



Sand Castle Beige | **SCH-006**



Autumn Beige | **SCH-007**



Eggshell Beige | **SCH-008**



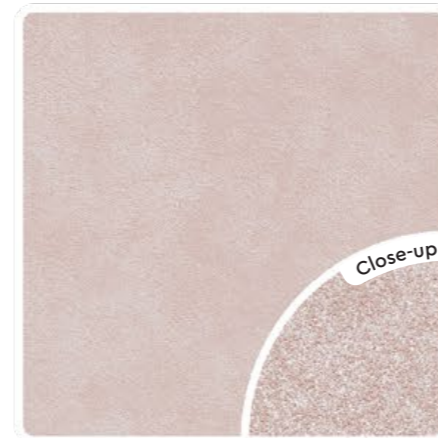
Desert Gold | **SCH-009**

SCH-015

POWDER  
BLUE



Baby Doll Pink | SCH-013



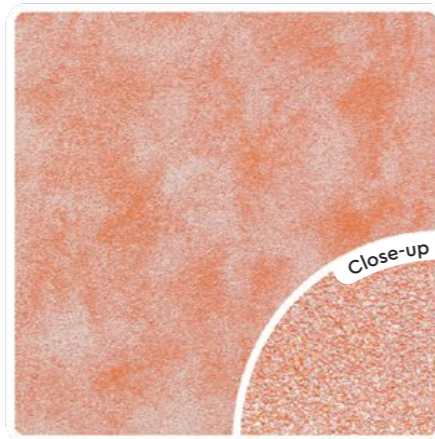
Coral Blush | SCH-014



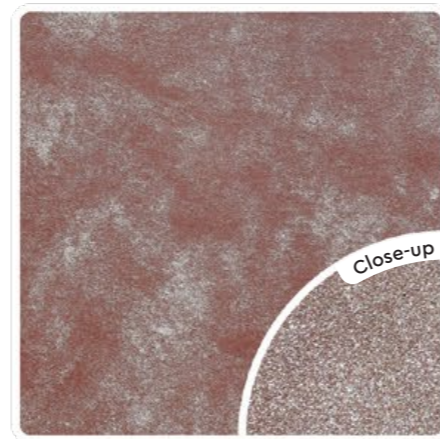
Powder Blue | SCH-015



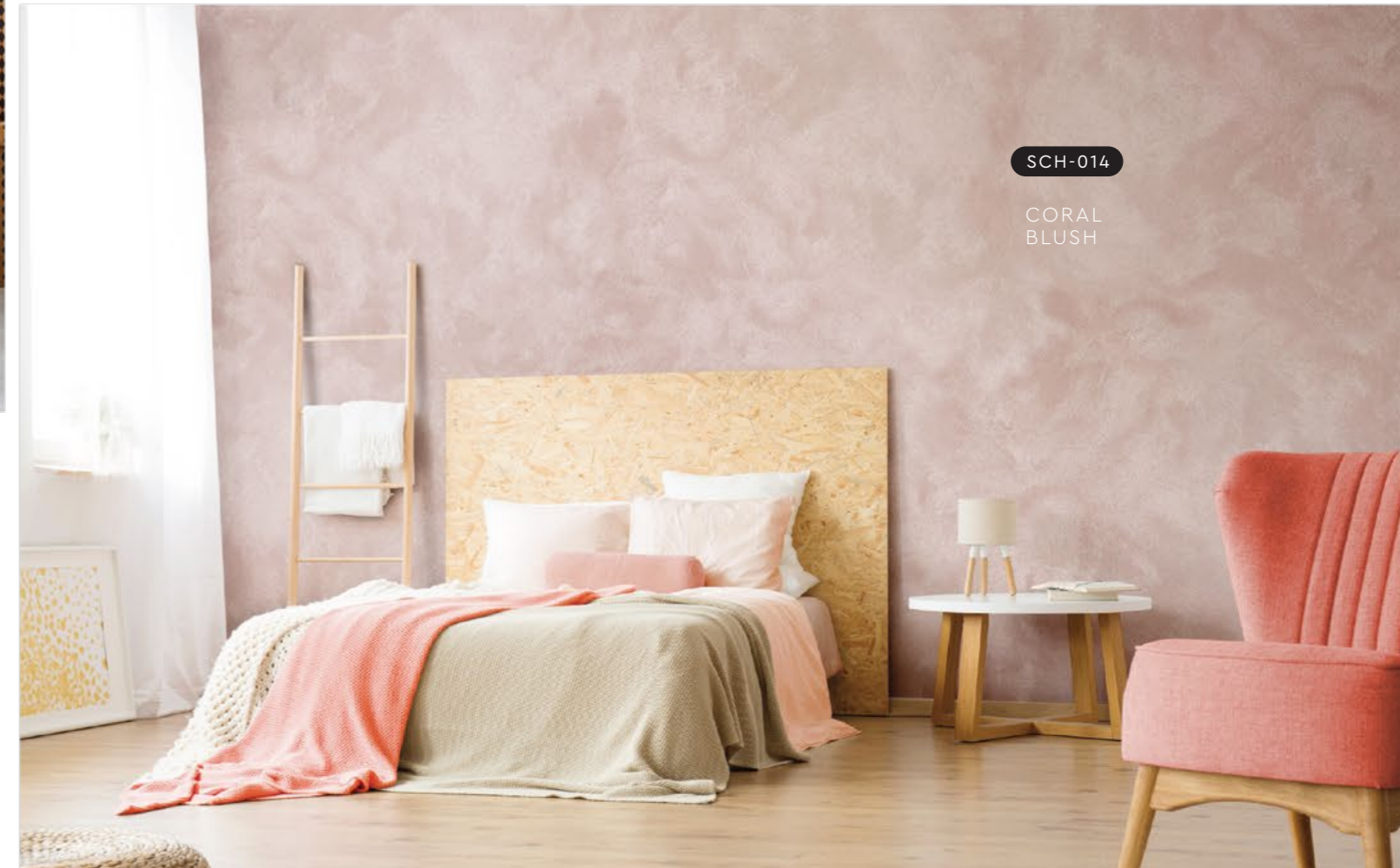
Honey Yellow | SCH-010



Peach Blossom | SCH-011



Plum Sunset | SCH-012

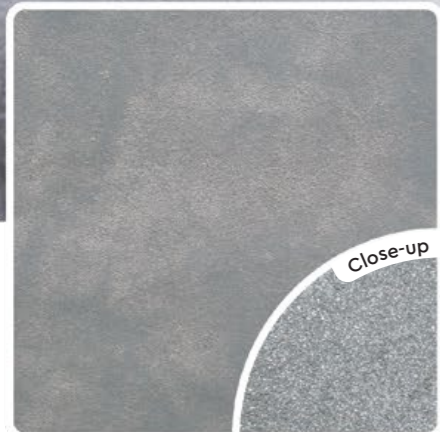


SCH-014

CORAL  
BLUSH

SCH-019

PEACOCK  
BLUE



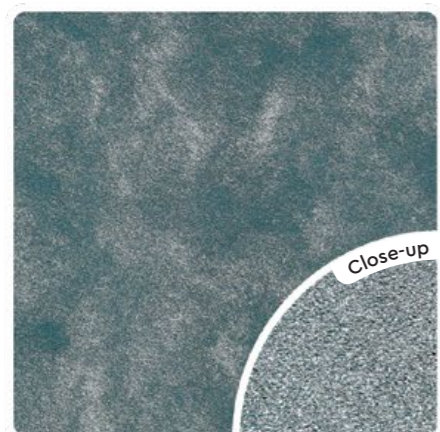
Stardust Silver | SCH-016



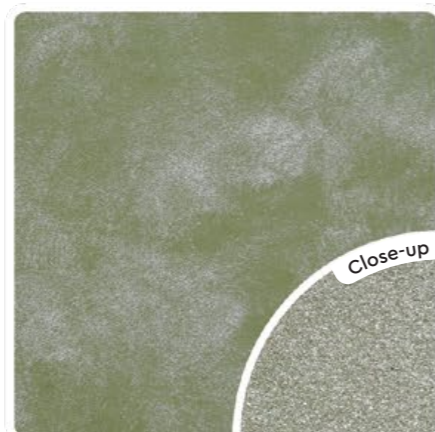
Lace Blue | SCH-017



Ash Grey | SCH-018



Peacock Blue | SCH-019



Olive Tree | SCH-020



Tropical Green | SCH-021

# APPLICATION TECHNIQUE



APPLICATION VIDEO

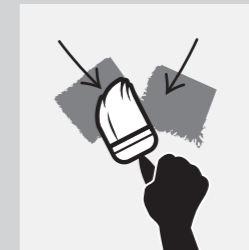
Preparation: - Cover the edges of surface that won't be painted by masking it with tape, paper or plastic.  
- Clean up the wall surface to ensure it is free from dirt and dust.



## 1 PRIMER

Roll 2 layers of primer on the entire surface. Allow 30 minutes to dry between the layers.  
(The primer can be diluted with maximum 5% of clean water)

Tool: Roller



## 2 TEXTURE COAT

Brush on texture coat in criss cross patterns. Apply 1-2 layers. Ensure the whole surface area is covered.

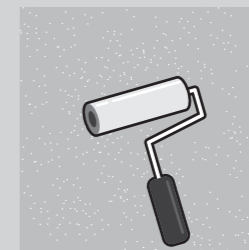
Tool: Brush



## 3 FLATTENING

Flatten the entire surface in circular motion to enhance the pattern.

Tool: Plastic Scrapper



## 4 TOPCOAT

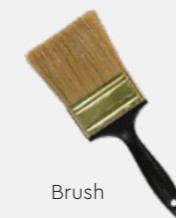
Evenly roll SR-Top 3 on entire surface. Allow to dry for 1 hour.

Tool: Roller

Tools:



Roller



Brush



Plastic Scrapper



## PACKING DATA

1 L		Primer	Coverage (per set)	
1 L	Texture Coat		WALL	6 - 7 sqm
1 L	Topcoat (SR-Top 3)		CEILING	5 - 6 sqm

# Strato® taffeta

A vibrant color layered in texture and dusted with a shimmering pearl effect crafts a bold and radiant feel onto the wall.



• INTERIOR ONLY

## Features

Low VOC & Odor



Formaldehyde & Lead Free



Green Choice, Water Based & Eco-friendly



Easy, Quick Application & DIY Friendly



Easy Maintenance

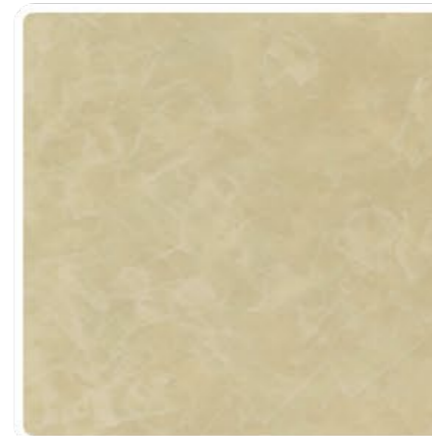


SRT-219

OYSTER  
BEIGE



Light Sapphire | **SRT-214**



Oyster Beige | **SRT-219**



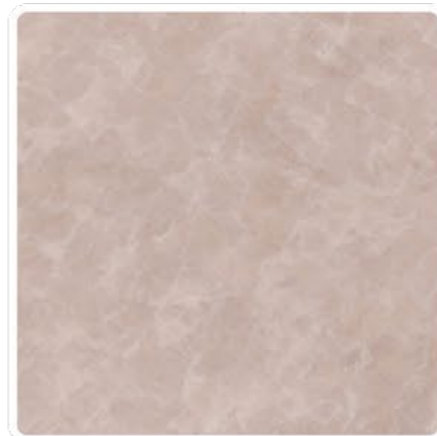
Blue Waves | **SRT-225**



Pewter Grey | **SRT-201**



Light Steel Blue | **SRT-203**



Light Sepia | **SRT-209**

SRT-201

PEWTER  
GREY



SRT-214

LIGHT  
SAPPHIRE



SRT-232

PALE  
LAVENDER



Malted Mocha | SRT-231



Pale Lavender | SRT-232



Ocean Surface | SRT-233

# APPLICATION TECHNIQUE



APPLICATION VIDEO

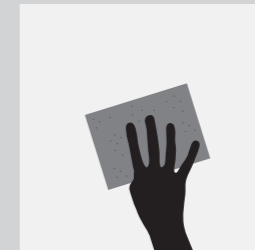
Preparation: - Cover the edges of surface that won't be painted by masking it with tape, paper or plastic.  
- Clean up the wall surface to ensure it is free from dirt and dust.



## 1 PRIMER

Roll 2 layers of primer on the entire surface. Allow 30 minutes to dry between the layers.  
(The primer can be diluted with maximum 5% of clean water)

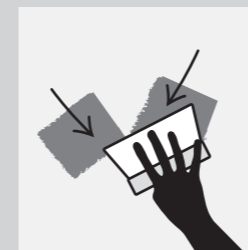
Tool: Roller



## 2 SANDING (OPTIONAL)

Sand the entire surface in circular motion to ensure the surface is smooth.

Tool: 600 Grit Sand Paper



## 3 TEXTURE COAT

Scrape texture coat in a random criss cross pattern. 2-3 layers. Every layer requires 30 minutes to dry.

Tool: Steel Scrapper



## 4 SANDING

Sand the entire surface in circular motion to enhance the pattern.

Tool: 600 Grit Sand Paper



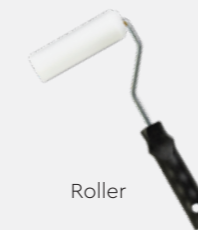
## 5 TOPCOAT

Scrape on topcoat SR-Top 2 in a random criss cross overlapping patterns. Allow 1 hour to dry.

Tool: Steel Scrapper

✦✦ Taffeta has a **shimmering** pearl effect topcoat.  
✦✦ For a **matte** finishing, please request **SR-Top 1**.

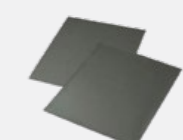
Tools:



Roller



Steel Scrapper



Sand Paper (600 Grit)

# PACKING DATA

1 L	Primer
1 L	Texture Coat
0.5 L	Topcoat (SR-Top 2)

Coverage (per set)

WALL	4.5 sqm
CEILING	3.5 sqm

