



WIN*
RM 1,000!

Join our photo contest now!
*T&C Apply More info: suzuka.com.my/promotion



**WALL FINISH
PROFESSIONALS**
TAIWAN • MALAYSIA • THAILAND



Strato.
METALLICS
INTERIOR TEXTURE PAINTS



BRICK & STONE VENEER • TEXTURE PAINT • KASTPANEL • ECES • TEXTURE COATING • PEBBLE STONE COATING



suzuka.com.my

  [suzuka.group](https://www.facebook.com/suzuka.group) | Hotline : +6012-258 7388



* Photos of the products shown in this catalogue may vary in color due to lighting condition & printing. We suggest you examine actual product samples before ordering.

METALLICS-E1-2204

EDITION
01



Strato. METALLICS MERINO

"A *striking textured metallic pattern* that is *linen like* that can suit *elegant* but also *rustic designs*."



PRODUCT FEATURES



Low VOC
& Odor



Green Choice, Water
Based & Eco-friendly



Applicable
on Ceiling



Easy to
Touch Up



Formaldehyde
& Lead Free



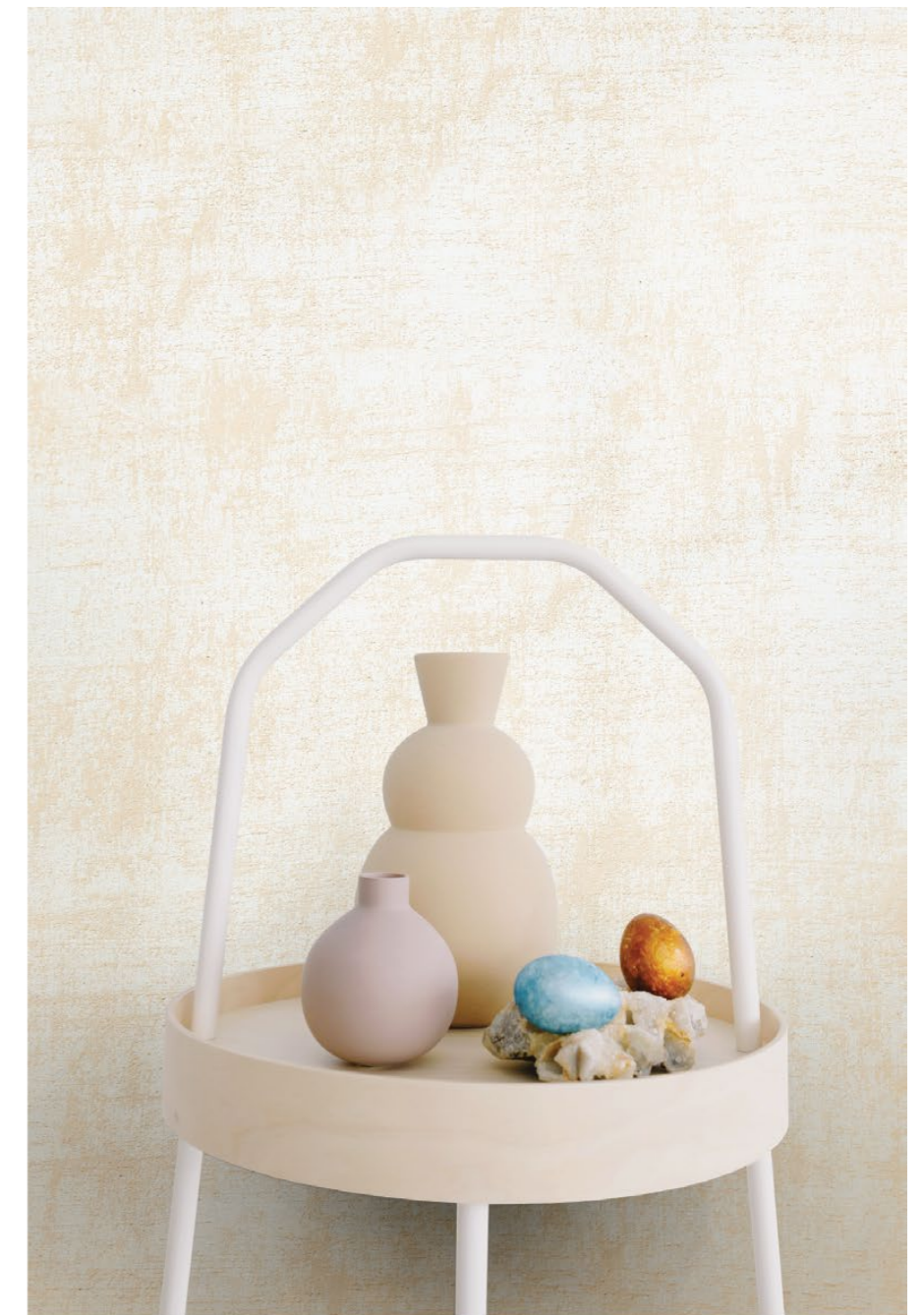
Easy Application
& DIY Friendly



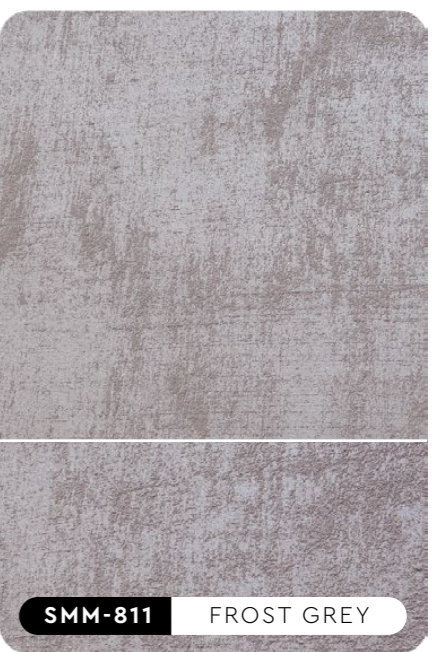
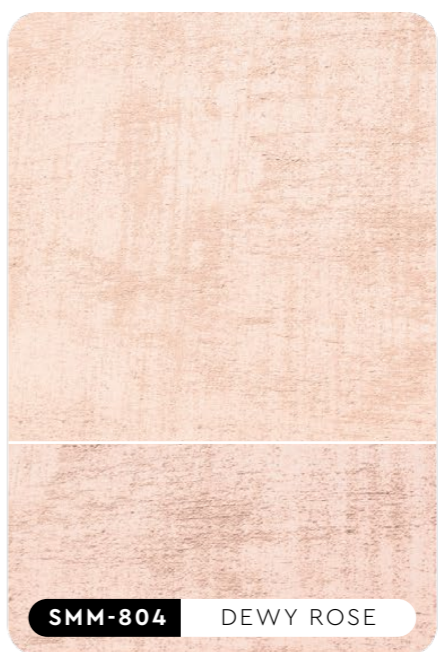
Easy
Maintenance



Metallic
Finish



All color shown are as close to the actual SUZUKA® Strato® colors as modern printing techniques permit. Color appearance/finishing may vary according to amount of coats, style of strokes applied and individual painting methods.





APPLICATION TECHNIQUE



APPLICATION VIDEO

Preparation: - Cover the edges of surface that won't be painted by masking it with tape, paper or plastic.
- Clean up the wall surface to ensure it is free from dirt and dust.

STEP 1: PRIMER

Roll 2 layers of primer on the entire surface.

STEP 2: SANDING

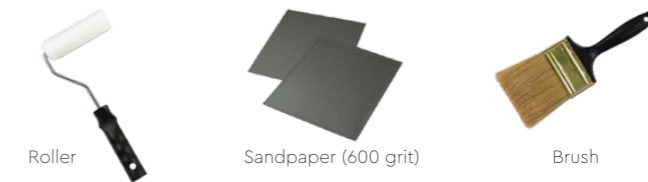
Sand surface with sandpaper (600 grit) to ensure a smooth surface.

STEP 3: TEXTURE COAT

First, brush texture coat horizontally on the surface.

Next, brush texture coat vertically on the surface.

TOOLS:



PACKING DATA

1 L	Primer
1 L	Texture Coat
Coverage (per set)	
WALL	3 - 4 m²/l
CEILING	2.5 - 3.5 m²/l



Strato METALLICS ORGANZA

"A smooth textured pattern with rich and creamy metallic finish that is suitable for all interior designs."



PRODUCT FEATURES



Low VOC & Odor



Green Choice, Water Based & Eco-friendly



Applicable on Ceiling



Easy to Touch Up



Formaldehyde & Lead Free



Easy Application & DIY Friendly



Easy Maintenance



Metallic Finish

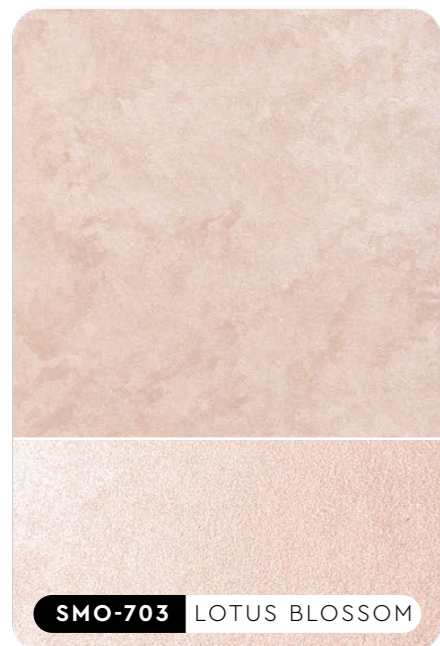


SMO-701 FLORAL BEIGE



SMO-702 SANDY BEIGE

All color shown are as close to the actual SUZUKA® Strato® colors as modern printing techniques permit. Color appearance/finishing may vary according to amount of coats, style of strokes applied and individual painting methods.



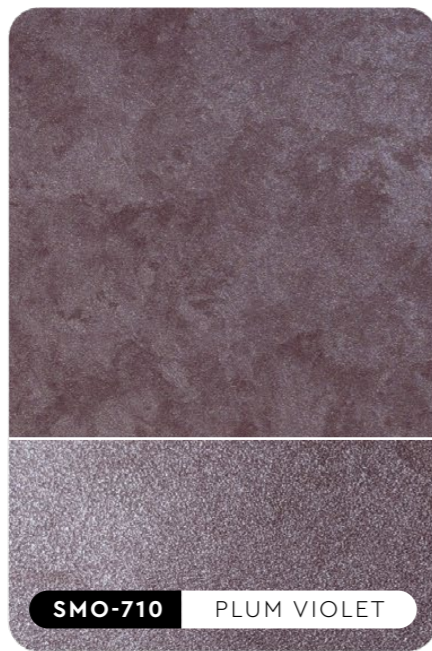
IMPORTANT NOTE

All color shown are as close to the actual SUZUKA® Strato® colors as modern printing techniques permit, nonetheless, there are still color/tonne differences.

We highly recommend seeing actual samples before ordering.



SMO-709 LAVA GREY



SMO-710 PLUM VIOLET



SMO-711 DARK AMBER



SMO-712 ANTIQUE WOOD



SMO-713 PALE MUSTARD



SMO-714 OLIVE GARDEN



APPLICATION TECHNIQUE



APPLICATION VIDEO

Preparation: - Cover the edges of surface that won't be painted by masking it with tape, paper or plastic.
- Clean up the wall surface to ensure it is free from dirt and dust.

STEP 1: PRIMER

Roll a layer of primer on the entire surface.

STEP 2: SANDING

Sand surface with sandpaper (600 grit) to ensure a smooth surface.

STEP 3: TEXTURE COAT (OPTION 1 - PICCOLO TOOL)

Scrape texture coat evenly on the surface. Next, use a piccolo tool to create texture effects by moving with random motion.

Repeat steps for a second layer of texture coat. Scrape texture coat on the surface and use piccolo tool to create texture by moving with random motion.

STEP 3: TEXTURE COAT (OPTION 2 - TROWEL)

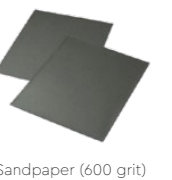
1st Layer

Scrape texture coat evenly on the surface.

2nd Layer

Scrape texture coat randomly on the surface to create texture.

TOOLS:



PACKING DATA



1 L	Primer
1 L	Texture Coat

* Piccolo tool is sold separately

Coverage (per set)

WALL	6 - 7 m ² /l
CEILING	5 - 6 m ² /l

